

CONSTRUCTION UPDATE

NEWSLETTER | SEPTEMBER 2020

Hospital Street vision takes shape

The connection between the existing facility and the new clinical services building is well underway.

Referred to as 'Hospital Street', once complete the strip will feature a number of improved amenities for patients and visitors, including the new hospital main entrance, an open plan concierge, retail and food precinct and a multi-faith room.

The split levelled Hospital Street will also feature a designated community space, new outpatients access to the Pharmacy and two open courtyards located on the ground floor.

Works to establish this connection have been extensive to date. Significant service isolations and system cutovers required to allow the hospital to continue normal operations, with minimal disruptions to service delivery, are being completed in collaboration with facility staff.

As part of these works, the current Fresh Café, located on the lower ground floor of the Building B foyer, will be closed and temporarily relocated to outside the Building D entrance and adjacent to the Cancer Therapy Centre.

Hospital Street is due to be delivered in the last quarter of 2021.



COMING SOON:

The new Fresh Café, featuring a modern and streamlined design and a boutique menu, will soon move to its new location outside the Building D entrance and adjacent to the Cancer Therapy Centre.

The café will be operational in the week commencing 21 September.

For more information:

Visit www.campbelltownredevelopment.health.nsw.gov.au

Phone (02) 4634 4994 or 0472 828 116

Email SWSLHD-CampbelltownHospitalRedevelopment@health.nsw.gov.au



Clinicians overjoyed as redevelopment spotlight focuses on Mental Health

As the concrete floor slabs were laid for the first of seven dedicated levels of mental health units being integrated into the new clinical services building (CSB), the district Director of Operations Mental Health, Jenny Glass, could not contain her excitement.

“For the first time ever at Campbelltown, we will have a range of modern mental health units all located in the one building, offering improved connectedness, safety and access to other key medical and support services,” she said.

The new building will feature specialised units providing mental health care across the lifespan, and improved spaces for mental health assessment in the emergency department.

New and enhanced services will be delivered at Campbelltown, including adolescent services, a gender specific acute unit, a new older person's service, Mental Health Intensive Care unit, and a medium secure rehabilitation unit supporting people with complex illnesses towards reintegration into community living.

The new spaces will significantly increase overall mental health service capacity.

Ms Glass said once complete, this redevelopment would provide the ability to deliver contemporary and evolving models of care, in connection with families and carers, to support the recovery of



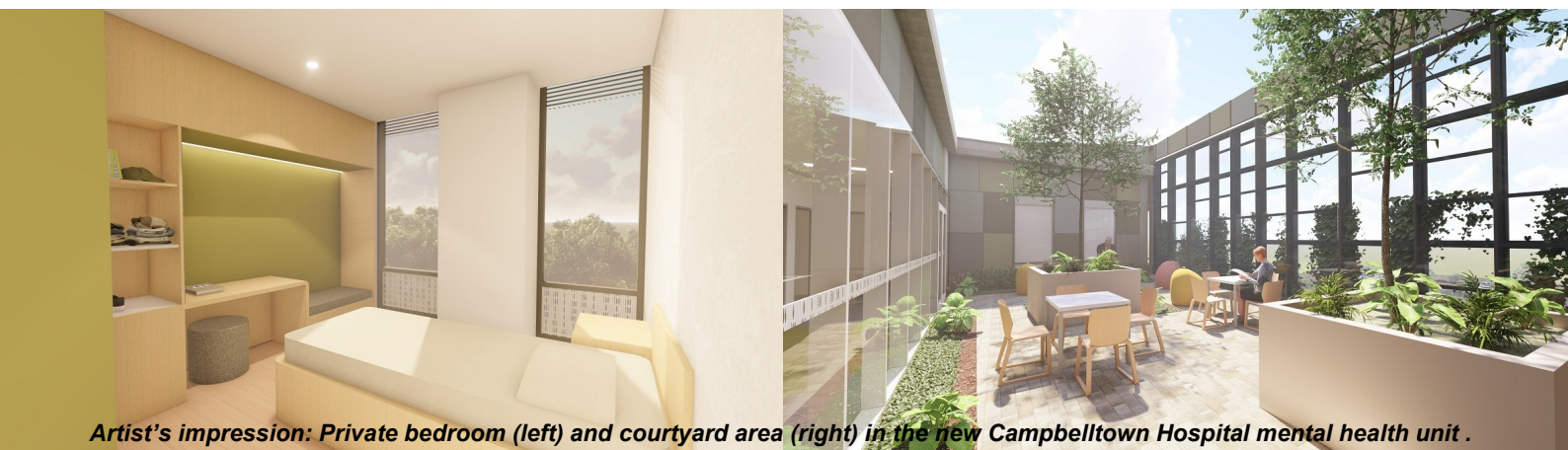
L2R: Operational Nurse Manager Natalie Vella, Director of Operations Mental Health Jenny Glass and Clinical Director Naveen Nataraj.

people experiencing mental health issues.

“We have been so lucky in the design stage to have the benefit of input from community members including consumers and carers, as well as our clinical staff. Their insights have been invaluable.”

“Like all the designs in the new mental health units they will deliver modern private ensuite bedrooms and open light-filled indoor and outdoor spaces; offering a range of therapeutic environments in which people can work towards their recovery with the support of our multi-disciplinary teams. “

The older persons and medium secure rehabilitation units being constructed at Campbelltown Hospital are the first to be delivered under the NSW Government's 10-year mental health and infrastructure reform initiative.



Artist's impression: Private bedroom (left) and courtyard area (right) in the new Campbelltown Hospital mental health unit .

For more information:

Visit www.campbelltownredevelopment.health.nsw.gov.au

Phone (02) 4634 4994 or 0472 828 116

Email SWSLHD-CampbelltownHospitalRedevelopment@health.nsw.gov.au

