



WHAT WAS just a patch of dirt a short 12 months ago is now a colossal vision of steel and structure towering above the cityscape.

Despite inclement weather, October delivered significant developments on the project front.

The 12-storey, technologically integrated, clinical services building; which represents a tower of opportunity and world-class health outcomes for the local community, has just completed all concrete pours to the Level 7 footprint.

The new building is on schedule for a proposed topping out of the helipad early next year.

Multiple active construction sites are open across the campus, with more than 500 contractors onsite each day working hard to deliver the new hospital.

Installation of the hospital's new power supply along Appin Road continues as well as work to establish a new entry/exit point at Therry Road.

Upgrades and restorative road works along Link Road and the P1/P2 car parks has commenced

and extension works to the Cancer Therapy Centre are ramping up for an anticipated completion at the end of the first quarter in 2021.

Refurbishment works to the new admin hub for the General Manager's Unit and Allied Health is almost complete with the space due to be handed over to the facility for operational commissioning later this month; and teams set to move in before Christmas.

Hospital Street works are progressing, with the old Pharmacy currently being stripped and demolished.

Campbelltown's signature rotunda, located in the former main entrance foyer is also being readied for demolition, with new foundations and stabilising piles being erected to support the new structure.

Solar panels are also currently being installed on Building B of the existing hospital. This will achieve \$34,000 per year in savings and annually produce approximately 236 megawatts of energy to support the ongoing operation of the building.

For more information:

Visit www.campbelltownredevelopment.health.nsw.gov.au

Phone (02) 4634 4994 or 0472 828 116

Email SWSLHD-CampbelltownHospitalRedevelopment@health.nsw.gov.au





THE HOSPITAL STREET vision is coming to life with the latest designs approved for development.

The link way, which will connect the new clinical services building to the existing facility will boast a community hub, café's and a retail space.

The southern entry will lead directly into the new concierge model reception area providing access to the lift wells and floors above.

A state-of-the-art collaborative meeting and event room has also been purpose designed for the space, along with a suite of modern amenities.

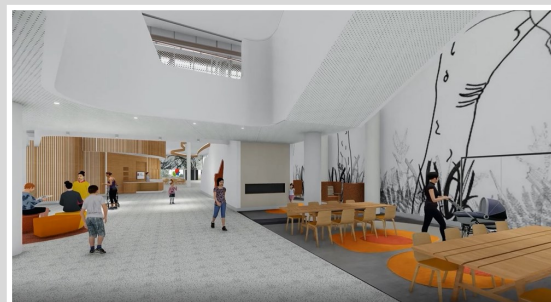
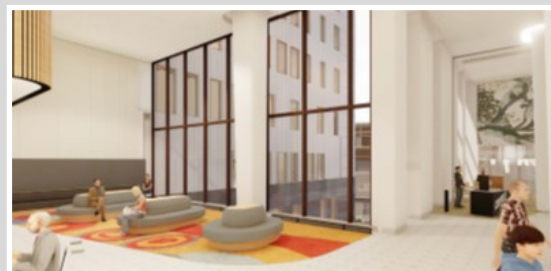
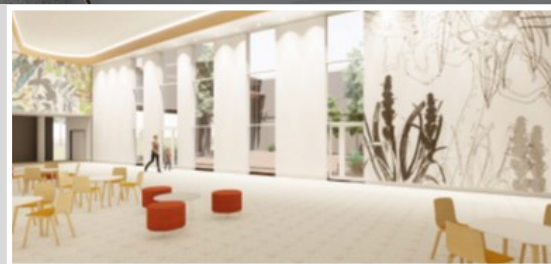
Community inspired artwork, including contributions from the local indigenous community, will support the centrepiece theme for the arts strategy of the new building – a large-scale ceiling mounted lyrebird feather.

Hospital Street artist renders depict what the final build may look like once delivered.

Above: Proposed mural art and the hanging lyrebird feather which is the centrepiece of the arts strategy.

Inset: Coffee corner and the new main entrance with concierge modelled reception bay.

Right: Community and public spaces fitted with ample seating and integrated technology.



For more information:

Visit www.campbelltownredevelopment.health.nsw.gov.au

Phone (02) 4634 4994 or 0472 828 116

Email SWSLHD-CampbelltownHospitalRedevelopment@health.nsw.gov.au

