



## All that glitters is gold

The shiny façade of the new clinical services building is the newest addition to the Campbelltown skyline. With 60 per cent of the scaffolding removed, the exterior of the impressive building will soon be on full display.

Designed by Billard Leece Partnership, the new façade and built form of the hospital is intended to capture and enhance Campbelltown's natural surroundings. Metal panels, porcelain tiles and compressed fibre cement were chosen to visually and textually represent the three distinct layers of the Cumberland Plains Woodland: the canopy, the mid-story shrub and the ground cover layer.

The exterior of the building's lower levels draw inspiration from the mid-story shrub and ground cover, with the matt and metallic porcelain tiles of varying earthy tones aiming to connect the build with the local geology of sandstone shale and native grasses.

The silvery greys and ranging golden shades at the top of the 12-storey building represent the upper stories of the bushland 'canopy'. Inspired by the changing colour of the foliage, the material used will catch light and change appearance throughout the different times of the day.

The unveiling of the new clinical services building is an exciting milestone for the project and a very visual sign of the world-class health care and enhanced services coming to the Campbelltown and Macarthur region.



For more information:

Visit [www.campbelltownredevelopment.health.nsw.gov.au](http://www.campbelltownredevelopment.health.nsw.gov.au)

Phone (02) 4634 4994 or 0472 828 116

Email [SWSLHD-CampbelltownHospitalRedevelopment@health.nsw.gov.au](mailto:SWSLHD-CampbelltownHospitalRedevelopment@health.nsw.gov.au)





## Stones selected at Appin Quarry

A Welcome Stone, Sensory Stone and Healing Stone will feature in the new clinical services building.

In consultation and collaboration with local Aboriginal Elders and community members, the three feature rocks were selected from the local quarry in Appin last month.

Ranging in colour, they represent uniting different mobs from different countries, and feature the rich yellow ochre that Dharawal country is known for.

Acknowledging the Cumberland Plains that the hospital is built on, these stones will welcome, connect and celebrate the community.

The welcome stone will be located near the front entry and will feature indigenous language inviting you on to Dharawal Country.

The Sensory Stone will have engraved handprints of local elders that you can touch on your way through the hospital.

The third stone selected will be located in an external healing circle space. The circle is a dominant symbol in nature and is full of energy and motion.

Representing the cycle of life, the healing circle will be a place community and staff can go to reflect, rewind and reconnect with nature.



Uncle Ivan and Karen Beetson at Appin Quarry



## Did you know?

To power our new clinical services building, more than two kilometres of high voltage cabling was required to be run from the energy supply sub-station at Blair Athol, along Narellan Road and onto the campus via Appin Road.

Largely unseen, these works took seven months to complete and will supply all electrical requirements for the new clinical services building.

For more information:

Visit [www.campbelltownredevelopment.health.nsw.gov.au](http://www.campbelltownredevelopment.health.nsw.gov.au)

Phone (02) 4634 4994 or 0472 828 116

Email [SWSLHD-CampbelltownHospitalRedevelopment@health.nsw.gov.au](mailto:SWSLHD-CampbelltownHospitalRedevelopment@health.nsw.gov.au)





## It's what's on the inside that counts

With the final touches being placed on the outside, it's what's happening on the inside over the coming months that counts.

Hospital Street is starting to take shape, with works starting on the roofing. This will cover the future space and allow main entry fitouts to continue.

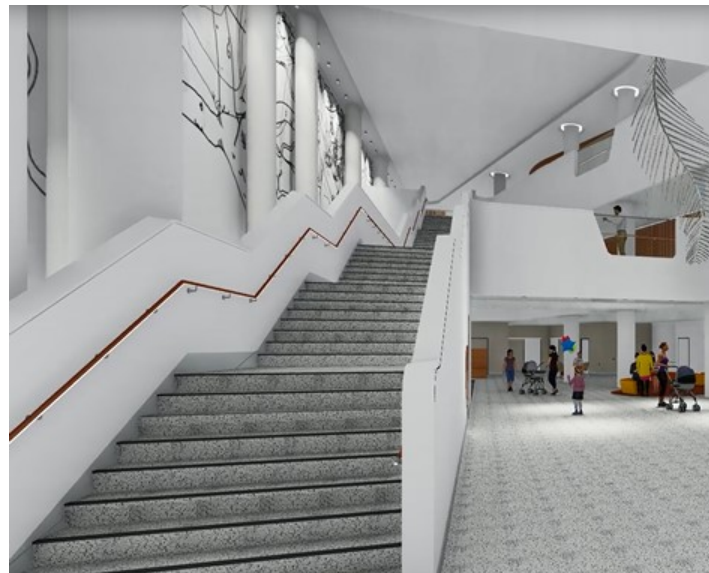
We now have a cascading staircase that spans three levels. This key feature will be the spine that connects the future entrance to existing buildings, complemented by multiple lifts.

You may have noticed the Building D entrance foyer has become a hub of activity. The Clinical Information Department has been relocated to Lower Ground 2 to make room for works to begin on the new dental clinic. Set for completion in December this year, the dental clinic is an exciting service addition and the first of its kind here at the hospital.

From upgrades and refurbishment works in existing buildings, through to P1 car park works and the hive of activity within the main construction site, it's certainly a busy and exciting time as our teams work towards delivering the future of health care in the region.

We look forward to keeping you up to date with all things redevelopment as we get closer to completion of the new clinical services building.

Be sure to stay in the know and follow along on the Campbelltown Hospital Facebook page, check out our monthly newsletters and keep an eye out for our project update videos throughout the year.



Artist impression: Hospital Street stairs



Hospital Street stairs under construction



## Our latest video is out now

With a spotlight on mental health, see how both community and staff have been involved in shaping the future of services at Campbelltown Hospital.

Watch now at [www.youtube.com/watch?v=OEmGI10Dn8I](https://www.youtube.com/watch?v=OEmGI10Dn8I)

For more information:

Visit [www.campbelltownredevelopment.health.nsw.gov.au](http://www.campbelltownredevelopment.health.nsw.gov.au)

Phone (02) 4634 4994 or 0472 828 116

Email [SWSLHD-CampbelltownHospitalRedevelopment@health.nsw.gov.au](mailto:SWSLHD-CampbelltownHospitalRedevelopment@health.nsw.gov.au)

