



Green light for new rooftop helipad

EXCITING MILESTONE: The first helicopter landed on the new clinical services building rooftop helipad in late March, with the trial flights enabling a crew of technicians to confirm that all equipment and lighting is working as expected to accommodate future landings.

Aviation consultant Jeff Stark, worked on the design of the new rooftop helipad.

Having more than 40 years' experience in aviation with the Australian Army, Jeff worked to plan and design the markings, lighting, position and operations.

To ensure the best landing and take-off positions are marked for pilots, Jeff had to research weather patterns for the Campbelltown region, as well as future development plans that might impact landing directions and access.

"In order to determine the best flight paths for helicopters, I had to examine building layout, especially the position of the lift core; long-term development plans for the campus; obstacles in the wider area; as well as look into the wind patterns for the past 25 years for the region," Jeff said.

"These trials are the culmination of extensive planning, design and investigation into all aspects of safety, operations, access and systems integration in the new hospital and I'm joyed that the new helipad has received the green light."

The helipad will be supported with high speed lifts that connect directly to the Emergency Department and theatres, ensuring the quick and safe movement of patients requiring immediate assessment and treatment. View more photos from the test on our [website](#).

For more information:

Visit www.campbelltownredevelopment.health.nsw.gov.au

Phone (02) 4634 4994 or 0477 344 848

Email SWSLHD-CampbelltownHospitalRedevelopment@health.nsw.gov.au





(L-R); Nina Nguyen, Nameerah Alam and Majeeda Bardian

All smiles at dental centre opening

It was all smiles for four year old Nameerah Alam, the first patient at the newly opened Campbelltown Hospital Dental Centre in March. A previous patient at Rosemeadow Oral Health Clinic, Nameerah and her family were delighted to check out the state-of-the-art facility.

After going for a 'ride' in the special children's dental chairs, Nameerah was well looked after by Oral Health Therapist, Nina Nguyen and Dental Assistant, Majeeda Bardian.

With new equipment and increased connectivity to services, the previous Rosemeadow Oral Health Clinic team are excited to be in their new space.

"Working with the team throughout the redevelopment, we have designed a purpose-built facility that complements our workflow and enhances the patient experience," Nina said.

"It's such a welcoming space for staff and patients, and it's great to be connected to other departments and services on campus."

With additional equipment and special accessible chairs, the first dental centre at Campbelltown Hospital caters to all eligible patients' needs.

Featured artist tours new building

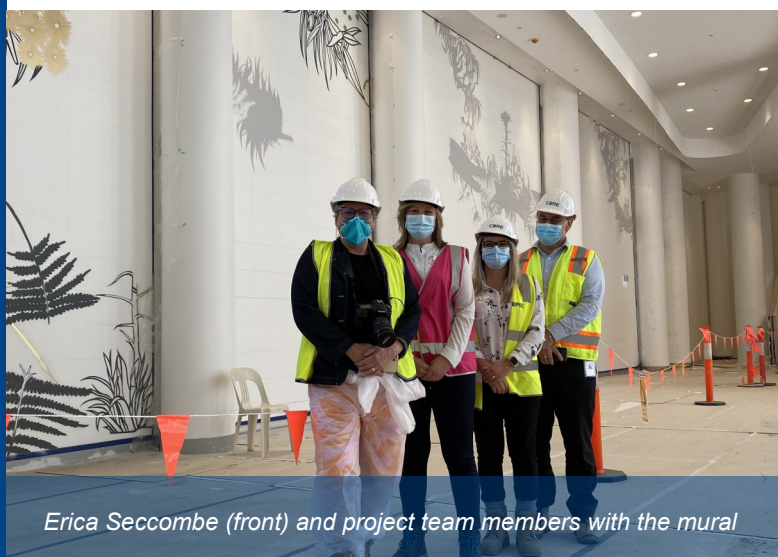
Artist Erica Seccombe recently joined us on site to view the install of her artwork that is featured throughout the new clinical services building. Complementing the cascading staircase that connects the future building to the existing, Erica's feature piece will take just under a month to be hand painted on the wall.

Together with the botanically-inspired art that will feature across all levels, this piece will further connect the interior with nature and pay tribute to the native flora of the Cumberland Plains.

Erica has also created dedicated artwork for the Children's Unit in the new building, with drawings of common wombats, sugar glider possums, blue tiger butterflies and more. Brightening the space, the playful illustrations will provide comfort, delight and interest to patients and families, many of whom spend long periods of time in the hospital.

"It is a privilege to work on such an amazing project for the Campbelltown community," Erica said.

"I hope my artwork welcomes and comforts staff, patients and visitors. These pieces were designed for the community and I am hopeful that they feel a sense of ownership and wonder as they walk through their new space."



Erica Seccombe (front) and project team members with the mural

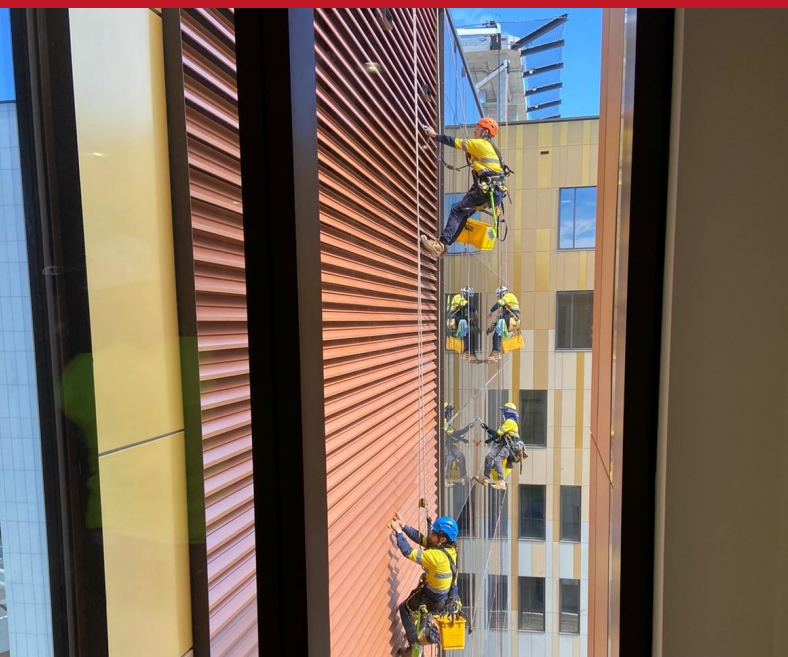
For more information:

Visit www.campbelltownredevelopment.health.nsw.gov.au

Phone (02) 4634 4994 or 0477 344 848

Email SWSLHD-CampbelltownHospitalRedevelopment@health.nsw.gov.au





Final touches and future tours

With the final touches being placed on the inside, cleaning of the exterior of the new building has commenced. Similar to a scene from Mission Impossible, our contractors are abseiling down the 12-storey building over the course of 10 weeks, ensuring the building is sparkling bright for the upcoming opening in mid-2022.

Window washing, panel dusting and tiny touch-ups – it's not long now until staff and the Campbelltown community will be welcomed into the new hospital spaces. Stay tuned for further details on an upcoming community open day for your chance to get a sneak peek tour of the new building before it opens to the public!

3000 medical gas outlets tested

Accompanied by an anaesthetist, our team tested more than 3000 medical gas outlets in the new clinical services building last month. Passing with flying colours, the tests ensured that the right gas with the appropriate quantity flows through the hospital's pipelines to the outlets at treatment bays.

From oxygen, suction, nitrous oxide and more, it was a week of work to confirm all compatible attachments were available and the correct airflow was supplied at all valves. Well done to the team on this effort – another test ticked off the list as we move towards the opening of the new building.



For more information:

Visit www.campbelltownredevelopment.health.nsw.gov.au

Phone (02) 4634 4994 or 0477 344 848

Email SWSLHD-CampbelltownHospitalRedevelopment@health.nsw.gov.au

